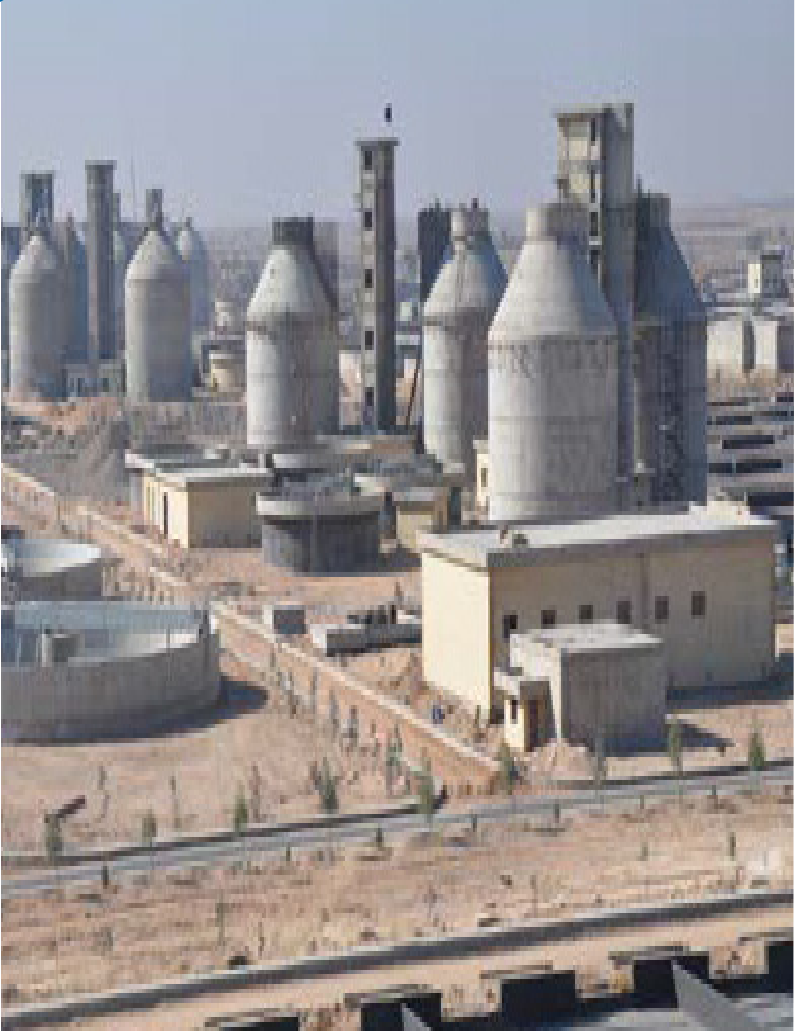


# WB



## WAHAT AL-BANAA

**FOR TRADE AND GENERAL CONTRACTING COMPANY LTD.**

*“Pioneers of contracting and investment in Mesopotamia”*



AL-BASRAH- AL-ZUBAIR – SAFWAN ROAD, NEXT TO SARENS COMPANY



+964-771 300 0081 - +964-781 300 0081



info@wahat-albanaa.iq,Tech-dep@wahat-albanaa.iq

# WELCOME & INTRODUCTION

WAHAT AL-BANAA COMPANY is dedicated to deliver-  
ingreliable construction services with a focus on quali-  
ty,innovation, and client satisfaction. We build with pur-  
pose,precision, and trust.



**We build with precision, passion,  
and purpose.**

WAHAT AL-BANAA ensures every project reflects  
reliability, innovation, and lasting value — turning  
visions into solid realities.



# TABLE OF CONTENTS

1	<i>COMPANY OVERVIEW</i>	<i>Pg.03</i>
2	<i>CONSTRUCTION SERVICES</i>	<i>Pg.11</i>
3	<i>SUPPLY CHAIN MANAGEMENT</i>	<i>Pg.16</i>
4	<i>LOGISTIC SERVICES</i>	<i>Pg.19</i>
5	<i>PROJECT MANAGEMENT</i>	<i>Pg.20</i>
6	<i>SAFETY, QUALITY &amp; PRODUCTIVITY</i>	<i>Pg.24</i>
7	<i>MANPOWER</i>	<i>Pg.26</i>
8	<i>OUR EQUIPMENT</i>	<i>Pg.28</i>
9	<i>PAST EXPERIENCES</i>	<i>Pg.32</i>
10	<i>COMPANY GALLERY</i>	<i>Pg.34</i>
11	<i>CERTIFICATIONS</i>	<i>Pg.54</i>
12	<i>AL-SABIL HUMANITARIAN ORGANIZATION</i>	<i>Pg.58</i>

## COMPANY OVERVIEW

---

WAHAT AL-BANAA CO. is a diversified construction, trading, and contracting company specializing in civil construction, mechanical, and electrical works, along with comprehensive logistics and equipment supply services. The company delivers integrated solutions for infrastructure, industrial, and commercial projects.

Our core services include civil works such as earthworks, concrete structures, buildings, roads, infrastructure development, and site preparation. We also provide mechanical and electrical services, including installation, testing, commissioning, and maintenance in compliance with project specifications and industry standards.

In support of project execution, WAHAT AL-BANAA Co. offers reliable logistics services, including transportation, material handling, site support, and project mobilization. Additionally, the company supplies a wide range of heavy and light construction equipment, available for rental or supply, to meet diverse project requirements.

Backed by experienced management, qualified engineers, and skilled technicians, WAHAT AL-BANAA Co. is committed to quality, safety, and on-time delivery. We implement strict quality control systems and HSE practices to ensure safe, efficient, and sustainable operations.

WAHAT AL-BANAA aims to establish long-term partnerships by providing cost-effective, professional, and dependable services across all project phases.

## CEO MESSAGE

---

At WAHAT AL-BANAA, we believe that success is built on commitment, integrity, and quality performance. Since our establishment, our goal has been to deliver reliable construction, contracting, and support services that meet our clients' expectations and contribute to sustainable development.

We specialize in civil construction, mechanical and electrical works, logistics, and equipment supply, providing integrated solutions that support complex and demanding projects. Our focus is always on safety, quality, and timely execution, supported by experienced engineers, skilled workforce, and effective management systems.

I would like to thank our clients for their trust and our team for their dedication and hard work. Together, we will continue to grow, strengthen our capabilities, and contribute positively to the communities we serve.

Chief Executive Officer



# OUR MISSION

WAHAT AL-BANAA CO. improve safety and reliability. We inspect, test, and evaluate our customers' critical assets, reducing liability, and safeguarding their consistent performance.

We are not satisfied simply meeting industry standards. WAHAT AL-BANAA CO. is dedicated to growing in size, scope, and performance. As we move forward, we will continue to concentrate on our people: employing the best personnel and providing them the highest quality leadership and technology.

## BUSINESS CONDUCT

Maintaining high standards of business conduct is essential to enhance our overall business performance, build trust, and maintain and improve our reputation with stakeholders. We believe visible leadership is essential to maintain a culture of Total Performance and responsible business conduct among personnel at all levels and wherever they work in the world.

Our individual WAHAT AL-BANAA CO. Policies have been approved by executive management and set out the principles and standards we require all our personnel to follow

## COMPLIANCE

WAHAT AL-BANAA CO. have a Management System for the control of quality, health, safety and environmental management.

WAHAT AL-BANAA CO. Iraq's commitment to safety also contributes to business performance and employee engagement.

Effective safety management through identifying, managing and mitigating safety risks is a key element of developing a total safety culture.

## CODE OF CONDUCT

- Quality Policy
- Health and Safety
- Policy Drug & Alcohol
- Policy Environmental
- Policy Business Ethics
- Policy Conicts of
- Interest Policy
- Diversity Policy

We will ensure consistently good safety management across WAHAT AL-BANAA Team. Our approach to safety covers the risks associated with daily office work and working at our customer and Vendors sites. Any incident or accident would be investigated and solutions identified to help prevent future occurrence.

## STRATEGY AND GOALS

### WORLD CLASS SAFETY

WAHAT AL-BANAA Co. Iraq aims to provide consistently good safety management across the Team. Protecting the health & safety of our personnel is a fundamental responsibility.

Embedding a commitment to safety across the business is a priority for the team. Ongoing education remind personnel that they must put safety first in all their activities and speak up on

## PERFORMANCE

Industry recognised KPI's are used our performance and actions taken to minimise the risk to the Team's personnel, its operations, and drive continual performance improvement.

## RISK MANAGEMENT

Improving the management of risk should be a priority action for every business, preventing business damage and reducing the total cost of risk.

## MANAGING SAFETY

Safety across the business is a major priority.

All Offices and personnel must comply with our Safety and Health Policy, which is approved by the Executive Management.

## OUR VISION

To be recognized as a leading and reliable construction and contracting company in the region, known for delivering high-quality civil construction, mechanical, and electrical works, supported by efficient logistics services and equipment supply. We aim to contribute to sustainable development by adopting best engineering practices, maintaining the highest standards of safety, quality, and environmental responsibility, and continuously enhancing our technical capabilities.

WAHAT AL-BANAA strives to build long-term partnerships with clients through professionalism, transparency, and consistent performance, while empowering our workforce, embracing innovation, and creating lasting value for our stakeholders and the communities we serve.

## CORE VALUES

Through the creation of WAHAT AL-BANAA Co. we have worked on a strategic and tactical plan to provide each and every customer with a new and innovative alternative in the Industry. Our level of expertise spans the areas of design, installation and commissioning to maintenance and servicing in the range services.

Further to this, it is our goal to provide our customers with new levels of customer satisfaction and commitment to quality.



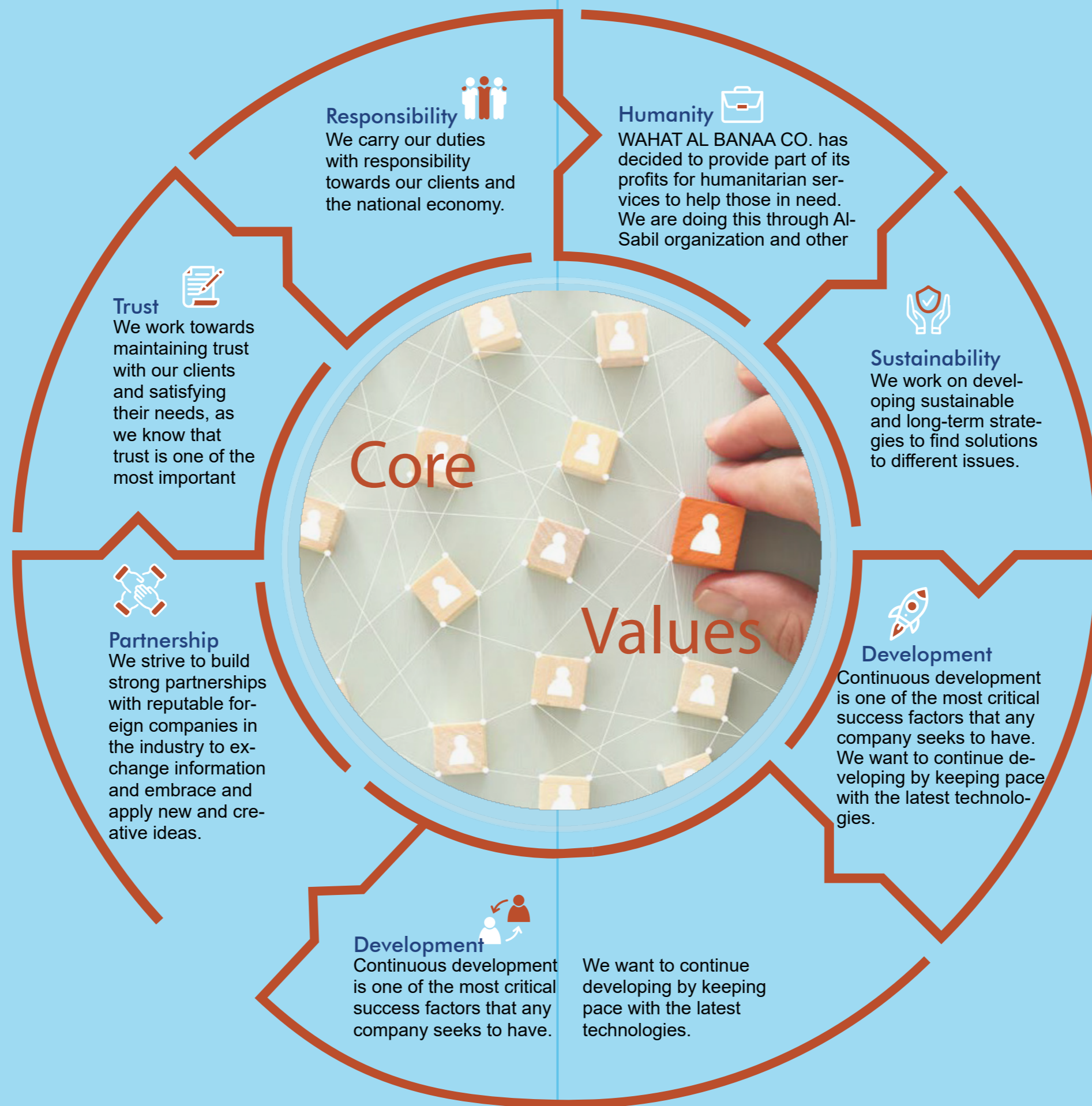
## Company's mission and vision in the development and implementation of projects

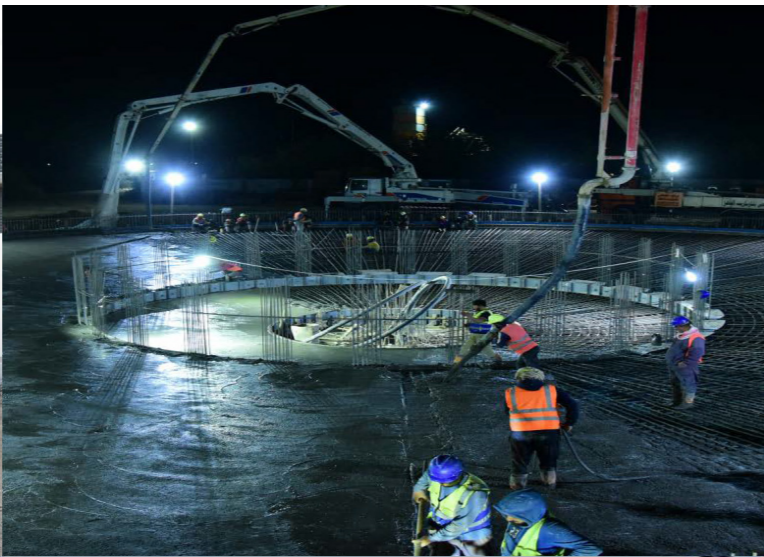
### MISSION

We aim to develop Iraq's infrastructure and fulfill the basic needs of the Iraqi citizens. We want to effectively contribute to the investment industry, providing responsible and sustainable solutions.

### VISION







## CONSTRUCTION SERVICES

### CIVIL WORKS

WAHAT AL-BANAA Co. offers a full range of civil construction services, delivering high-quality and reliable solutions for industrial, commercial, infrastructure, and oil & gas projects. Our civil works are executed by qualified engineers and skilled teams, in full compliance with approved drawings, technical specifications, contractual requirements, and applicable international standards.

Our scope of civil works includes:

- Site preparation, land clearing, grading, and leveling
- Bulk excavation, trenching, backfilling, and soil compaction
- Construction of reinforced concrete structures, including foundations, footings, slabs, beams, columns, retaining walls, and concrete pads
- Well Pads and Access Roads Construction
- Concrete Pads and Equipment Foundations
- Temporary Facilities and Camp Works
- Precast Concrete Installation
- Structural Repair and Rehabilitation
- Civil Maintenance and Modification Works
- Road works, internal access roads, pavements, curbstones, and parking areas
- Drainage systems, stormwater networks, culverts, manholes, and channels
- Infrastructure works, including underground utilities, ducts, and service corridors
- Masonry works, block works, plastering, and finishing works
- Fencing, boundary walls, and external site works
- Rehabilitation, strengthening, maintenance, and repair of existing civil structures

WAHAT AL-BANAA applies strict quality assurance and quality control (QA/QC) procedures throughout all construction stages, supported by comprehensive Health, Safety, and Environmental (HSE) practices. Our focus is on delivering safe, durable, and cost-effective civil works while meeting project schedules and client expectations.

# CONSTRUCTION SERVICES

## MECHANICAL WORKS

WAHAT AL-BANAA provides comprehensive mechanical works services for industrial, commercial, and infrastructure projects, including oil & gas facilities. Our team of skilled engineers and technicians delivers high-quality solutions in accordance with project specifications, international standards, and safety requirements.

Our mechanical services cover the installation, fabrication, testing, and maintenance of various mechanical systems, including piping, pumps, valves, HVAC, fire protection, and industrial equipment. We also provide mechanical support for equipment alignment, commissioning, and structural works, ensuring efficient and reliable operation.

With a strong focus on quality, safety, and timely execution, WAHAT AL-BANAA combines technical expertise, modern equipment, and best practices to deliver cost-effective, durable, and safe mechanical solutions that meet client expectations and project objectives.

Our scope of includes:

- Piping Installation and Fabrication
- Mechanical Equipment Installation
- Pumps, Valves, and Compressors Installation
- HVAC (Heating, Ventilation, and Air Conditioning) Systems
- Firefighting Systems Installation
- Industrial Ducting Installation
- Pipe Supports, Hangers, and Steel Structures
- Tank and Vessel Installation
- Structural Mechanical Works
- Fabrication of Steel and Mechanical Components
- Erection of Mechanical Skids and Modules
- Mechanical Equipment Alignment and Testing
- Thermal Insulation and Coating Works
- Fabrication and Installation of Flanges and Fittings
- Mechanical Modifications and Upgrades



# ELECTRICAL & INSTRUMENTATION

WAHAT AL-BANAA Co. is a market leader in providing engineering and construction the power and control projects related with oil and gas plants.

Our scope includes:

- Installation and Commissioning of Diesel Generator Set.
- Power Transformer (132/33kv,33/11kv,11/0.4kv,)
- EHV GIS panel.
- Dummy panel.
- Power Distribution Panel.
- Switchgear and MCC Panel.
- MV Switchgear Panel.
- NGR and VSD Panel.
- Power Capacitor System, Power Monitoring System , SCADA PMS/ECS
- Bus duct Systems (indoor and outdoor)
- Power System (Cable tray, Cable pulling LV &HV (1.5mm<sup>2</sup> to 630mm<sup>2</sup>), Glanding and Termination
- Installation of Fiber Optic Cables
- CCTV Systems
- Communication Systems (Paging, P/A, Wireless Radio)
- Grounding System
- Fire Alarm System
- Telephone System
- Lighting System



# SUPPLY CHAIN MANAGEMENT

## **Procurement/supply Chain Management**

As a key element in the execution of any project, procurement at WAHAT AL-BANAA Co. is managed by a dedicated team of approximately 100 professionals assigned to project task forces. This team is responsible for sourcing and qualifying new suppliers, purchasing materials, expediting orders, inspecting the manufacturing of equipment and bulk materials, and coordinating delivery and logistics activities.

Each project team assumes full ownership of its budget and delivery performance, supported by the expertise, systems, and processes of the WAHAT AL-BANAA Co. operating center to which it is assigned. All project teams adhere to common Group policies and a unified code of ethics.

WAHAT AL-BANAA Co. sources competitively on a global scale and offers clients dedicated procurement services to support project execution.

At the Group level, the WAHAT AL-BANAA Co. Procurement organization ensures alignment of

## **Supply Chain Management Expertise**

Our expertise spans the entire supply chain, from sourcing, purchasing, and transportation logistics to inventory control, inspection, and quality assurance. Every product and service we utilize must comply with our stringent quality and safety standards. In addition to our procurement offices, we maintain fabrication facilities for manufacturing required components, as well as laydown yards for the storage of steel and equipment.

Over the Fifteen years, we've developed strong relationships with key suppliers, manufacturers and service providers in a variety of industries. We utilize competitive bidding and negotiate long-term agreements to obtain competitive prices for materials and services. We also do our homework, extensively researching markets and suppliers to ensure we prepare accurate estimates, select the best products and obtain the best prices.

## **Mission of Procurement**

- Develop and implement Procurement strategies to improve competitiveness
- Increase the Supplier base through the sourcing and qualification of new suppliers and products, with a focus on high value procurement countries
- Develop and manage long-term relationships and partnerships with WAHAT AL-BANAA
- Promote design-to-cost solutions
- Gather and report information critical to operations
- Ownership and enforcement of the Group's procurement policies
- Ownership and up-to-dating of a single worldwide e-procurement tool open to our

## **Smart Work Processes**

We believe that every member of the project team shares some responsibility for the supply chain. Our engineers work with customers to select the technologies and equipment that best meet the project and cost requirements. Our project managers and procurement staff synchronize project schedules, materials orders and shipping logistics to minimize work delays. Our logistics and safety experts ensure potentially hazardous materials are transported & handled safely and responsibly. We also design our projects and train our people to ensure construction materials are not wasted.



## LOGISTIC SERVICES

WAHAT AL-BANAA offers a full range of logistics and project support services, providing efficient, safe, and reliable solutions to support construction, mechanical, electrical, and infrastructure projects. Our logistics capabilities are designed to ensure that materials, equipment, and manpower are delivered to the right place at the right time, enabling projects to proceed smoothly, efficiently, and within schedule.

Our comprehensive logistics services include:

- **Transportation and Delivery:** Safe and timely transport of materials, equipment, and machinery to project sites.
- **Mobilization and Demobilization:** Efficient movement of manpower, heavy machinery, and construction equipment to and from project locations.
- **Storage and Warehousing:** Organized storage facilities with inventory management to ensure availability and protection of materials and equipment.
- **Heavy and Light Equipment Rental and Supply:** Provision of cranes, trucks, earthmoving machinery, generators, and other essential construction equipment.
- **Site Support and Material Handling:** Coordination of onsite material distribution, lifting, and handling for smooth operations.
- **Fleet Management and Planning:** Optimized routing and scheduling of vehicles and equipment to maximize efficiency and reduce delays.
- **Coordination of Subcontractors and Suppliers:** Streamlined logistics for all third-party services to maintain project workflow.
- **Temporary Facilities Support:** Setup and management of temporary offices, storage areas, and worker camps.
- **Tracking, Reporting, and Documentation:** Real-time monitoring of shipments, equipment, and manpower, ensuring transparency and accountability.

## PROJECT MANAGEMENT

With more than 16 years of experience, WAHAT AL-BANAA Co. has consistently proven its capability to successfully deliver industrial and infrastructure projects of varying types, complexities, and scales. Our track record spans diverse project environments and delivery methodologies, reflecting our adaptability and reliability.

Our project management expertise encompasses a wide range of services and contract structures, including project management consultancy and various contractual arrangements. This broad experience enables us to execute projects efficiently while consistently meeting—and often exceeding—client expectations.

A key element of WAHAT AL-BANAA Co.'s success is our disciplined and proactive project management approach, which begins well before contract award during the bidding and evaluation phase. Each opportunity is thoroughly assessed against technical, financial, and operational criteria. Commercial targets or asset utilization considerations never take precedence over feasibility, quality, or risk control.

Following contract award, a dedicated Project Director is appointed with full authority and serves as the single point of accountability throughout the entire project life cycle. Project performance is regularly reviewed and monitored by Senior Management through structured review processes, ensuring continuous alignment with project objectives, schedules, and budgets.

As an active contributor to the delivery of large-scale projects, WAHAT AL-BANAA Co. has developed strong and comprehensive project management capabilities. This expertise forms a core component of the value-added services we provide to our clients, regardless of project size or contract type.

Our risk management framework extends across the full project life cycle, beginning with the pre-bid review of the Invitation to Bid (ITB) and continuing until all contractual obligations are fully satisfied. During both bid preparation and project execution, all critical factors—including commercial strategy, financial exposure, contractual terms, technical requirements, health and safety, and environmental considerations—are systematically evaluated to identify, manage, and mitigate potential risks.



### "One Team" Approach

WAHAT AL-BANAA Co. works closely with its clients to form "One Project Team", ensuring that project vision, goals, and expectations are fully achieved. We believe that project success can only be realized through genuine collaboration and strong team spirit. Each project begins with the establishment of a collaborative working environment built on open communication, transparency, and mutual trust. Our teams remain flexible and responsive throughout the project lifecycle, continuously adapting to challenges and changes in order to achieve shared project objectives and deliver successful outcomes.

### Operational Excellence

WAHAT AL-BANAA Co. business focus is centered on achieving operational excellence on all of our programs and projects. The key attributes of operational excellence we employ in-

- Application of industry standard processes and procedures, best practices and lessons learned
- Focus on safety and quality
- Ability to integrate our project management systems into existing customer platforms
- Innovations to drive cost and schedule performance
- Aggressive risk management

# WHY WAHAT AL-BANAA CO.

## ***You Talk, We Listen***

We strive to understand our client's comfort needs first. Then all decisions are made with those needs in mind. A management service is worthless if it doesn't meet your needs. You talk, we listen... then we throw in lots of ideas for improvement.

## ***We Value Integrity***

We believe in doing business with honesty, integrity and a sincere heart for others. We aren't going to prose you something you don't need. We won't lie to get your business. We will treat you with kindness and respect. The way it should be (and far too often is not).

## ***We Know The Industry***

With over a decade of combined experience in the contracting industry, we tackle any project with the best tool any technology can have experience.

## ***We Stand Behind Our Work***

Every service that ME & I performs is backed up by our incredible warranty. We believe in doing something right the first time, and making sure that our clients get true value for their hard-earned money.

## ***We Stand Behind Our Work***

WAHAT AL-BANAA Co. strives to treat each and every one of our custom-ers with the attention that they deserve. We guarantee a professional, pleasant experience from when you pick up the phone all the way to our professional team driving off from your comfortable office. And should you be unsatisfied with any moment of the service you are provided, a member of our team is only a phone call away to ensure that your concerns are addressed in a timely manner. Because we recognize that our customer is not dependent upon us, we are dependent upon our customer.

## ***We Quantify Our Customer Satisfaction***

It's easy to say that you care about customer service, but are you asking your customer how they felt about the experience WAHAT AL-BANAA Co. follows up with you to make sure that you were happy with the service you received. We track the results of our customer Satisfaction Surveys so that we can be certain that we are delivering our customers service that leaves them with a smile.

## ***We Will Be Better Tomorrow Than We Are Today***

We constantly improve. We strive for ZERO defects in all we do, and ALWAYS keep our promises. We do not cut corners. We are committed to providing an service that will not just meet, but that will exceed our customer's expectations regarding value and quality.

## SAFETY, QUALITY & PRODUCTIVITY

---

WAHAT AL-BANAA Co. believe that only by integrating safety, quality, and productivity can we provide the high-quality services expected of us. Striving for an injury-free environment is a company-wide core value. To that end, as part of our award-winning Be Safe For Life! program, we continue to alert our employees to the potential for injuries at every turn.

### Safety

WAHAT AL-BANAA Co. safety performance is far better compared to our Competitors and Recognized as an industry standard-setter.

One reason is our intense focus on good work practice to reduce the inherent risk in our work environment and prevent risky behaviour. Good performance is achieved when this message is reinforced with our effective and ongoing safety reminder campaign— this time reminding our employees to BE VIGILANT, and that injuries don't announce...they pounce.

### Quality

WAHAT AL-BANAA Co. Operating Companies collaborate to share information about new products and processes that have been proven to work. Our publications distribute this knowledge by detailing the product or process; outlining the safety, quality, and productivity benefits; and explaining investment and payback criteria.

### Productivity

WAHAT AL-BANAA Co. , productivity isn't about shortcuts – it's about creating the right conditions for schedules and plans to be completed on time or with time advantage.

This includes pre-planning, setup, deploying trained workers with the right tools and equipment, as well as the correct degree of instruction and supervision.

The integration of safety, quality and productivity has successfully reduced injuries and injury costs while improving quality and productivity. This makes WAHAT AL-BANAA Co. one of the safest and most efficient specialty contractors in the world – and the right choice for your next commercial construction and facilities services project.



# MANPOWER

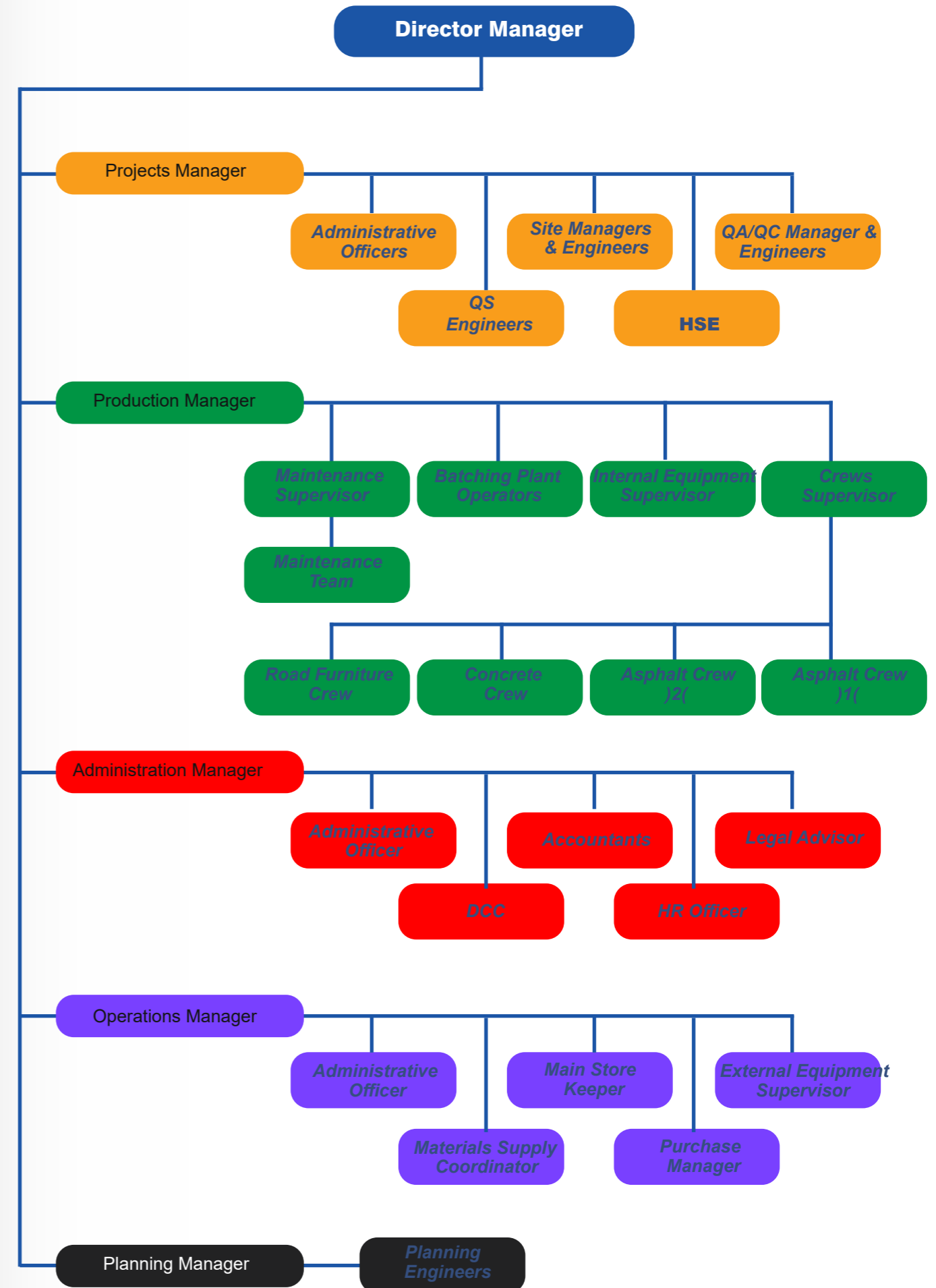
## Recruitment/Competency Assessment

Our recruitment, assessment, and selection processes are designed to identify talent with the required technical competencies and personal attributes that add measurable value to the WAHAT AL-BANAA Co. organization.

With a workforce comprising more than 70 highly educated engineering and administrative professionals, supported by over 450 technicians and skilled laborers, we have the capability and capacity to deliver our services efficiently and achieve our strategic objectives.

Role	No.
Project Director	2
Project Manager	3
Construction Manager	5
Design Manager	2
Senior Architect	2
Planning Engineer	3
Cost Consultant	2
Quality Control Manager	3
HSE Manager	3
Site Manager	6
Site Engineers	12
Senior Project Engineers	5
QA/QC Engineers	8
HSE Officers	12
Surveyors	8
CAD Operators	4
Site Administrators	12

Role	No.
Carpenters	60
Steel Fixers	75
Masons	45
Concrete Finishers	35
Pipe Fixers	25
Welders	20
Mechanical Technicians	15
Riggers	35
Electrical Technicians	20
Painters / Coaters	20
Scaffolding Erectors	25
HVAC Technicians	12
Plumbers	15
Foremen	20
Drivers	35
Equipment Operators	120
Common Worker	150



# Our Equipment



Equipment Type	Brand / Model	Capacity / Specification	Year of Manufacture	Quantity
Excavator	CAT / Komatsu / Hyundai	10–35 tons	2012–2022	8
Wheel Loader	CAT / Volvo / Doosan	2–5 m <sup>3</sup> bucket	2013–2021	6
Bulldozer	Komatsu / Shantui	120–350 HP	2011–2020	4
Motor Grader	CAT / Sany	120–250 HP	2012–2019	3
Vibratory Roller Compactor	Bomag / Dynapac	8–20 tons	2015–2021	4
Backhoe Loader	JCB / CAT	0.6–1 m <sup>3</sup> bucket	2014–2022	5
Skid Steer Loader	Bobcat / CAT	0.4–0.8 m <sup>3</sup> bucket	2015–2020	3
Water Tanker Truck	Scania / Mercedes-Benz	10,000–20,000 L	2014–2023	6
Fuel Tanker Truck	Scania / Isuzu	8,000–15,000 L	2013–2020	3
Generator (Diesel Powered)	Perkins / Cummins	50–500 kVA	2015–2023	12
Air Compressor (Portable / Stationary)	Atlas Copco / Ingersoll Rand	100–500 CFM	2012–2022	6
Tower Light (Mobile Lighting Unit)	Doosan / Generac	6–12 kW	2016–2022	10
Welding Machine (Arc / MIG / TIG)	Lincoln / Miller / ESAB	200–500 A	2010–2023	20
Concrete Vibrator	Mikasa / Honda	1–4 kW	2018–2023	15
Scaffolding Sets	Local Fabrication (GI / Aluminum)	Up to 6 m height	2017–2023	500 sets
Bar Bending & Cutting Machine	Jaypee / Sona	10–32 mm rebar	2016–2022	4



**COMPACTOR**  
(Different Loads)



**CONCRETE PUMB**  
(Different Loads)



**SIDE BOOM**



**FRONT LOADR**



**CRANE**  
(Different Loads)



**TANK TRUCK**  
(Different Loads)  
Diesel & Water



**GRADER**  
(Different Loads)



**ROLLER**  
(Different Loads)



**EXCAVATOR**  
(Different Loads)



**FLATBED**  
(Different Loads)



**MAN LIFT**  
(Different Loads)



**DUMP TRUK**  
(Different Loads)



**HIAB**



**TELEHANDLER**



**FORKLIFT**



**JCB**



**RUBBISH COLLECTOR**



**MIXER**  
(Different Loads)

# PAST EXPERIENCES

No.	Project Name	Client	Location	Work Description	Start Date	Finish Date
1	Al Hussainia Roads Rehabilitation Program	Baghdad Governate	Baghdad	Civil works including road leveling, sub-base preparation, drainage improvement, and asphalt resurfacing for municipal districts.	2009	2010
2	Furaiha Power Substation (33/11 kV)	Karbala Electricity Distribution	Karbala	Engineering, construction, and commissioning of 33/11 kV power substations, including transformers, switchgear, protection systems, control panels, cable works, and associated civil works.	2009	2010
3	Karbala Water Transmission Line Upgrade	MegaFlow	Karbala	Replacement and installation of water pipelines, valve chambers, and expansion of distribution networks.	2010	2011
4	Administration building, Al-Doura Powerplant Station	Al-Doura Electricity Distribution Directorate	Baghdad	Construction of the administration building, including structural, architectural, and finishing works, execution of foundations, concrete works, masonry, roofing, and internal/external finishes, installation support for basic electrical, mechanical, and utility services related to the building.	2010	2011
5	Abi Qaraq - Urban Infrastructure Upgrade	Babylon Governate	Babylon	Reconstruction of secondary roads, sidewalks, culverts, and stormwater channels across urban zones.	2011	2012
6	Alhussain Bridge Repair Project	Karbala Governate	Karbala	Structural reinforcement, deck repairs, guardrail installation, and load-bearing capacity improvements.	2011	2012
7	Saif Saad Sewage Lifting Pump Station	Karbala Municipality Directorate	Karbala	Construction, rehabilitation, and upgrading of sewage lifting and pumping stations, including electromechanical equipment, pumps, piping, valves, control systems, wet wells, and civil structures.	2011	2012
8	Al Shaab Distribution Power Lines	Global Electra	Baghdad	Installation of 11kV feeders, transformers, and electrical distribution network rehabilitation.	2011	2012
9	Al maamil - North Baghdad Road & Drainage Works	Horizon Build Co.	Baghdad	Civil works including road reconstruction, concrete drainage channels, and stormwater systems.	2012	2013
10	Al-Bahadriya Sewage Lifting Pump Station	Karbala Municipality Directorate	Karbala	Execution of sewerage and stormwater drainage networks, including pipe laying, manholes, excavation, backfilling, and surface restoration.	2012	2013
11	Karbala Pumping Station Revamp	MegaFlow	Karbala	Mechanical upgrades including pump rehabilitation, piping replacement, and control valve installation.	2012	2013
12	Al Rashidia - Baghdad Bridge Access Improvements	Union Construct	Baghdad	Construction of approach embankments, retaining walls, and asphalt surfacing for a major bridge.	2013	2014
13	GRB main line project	Karbala Governate	Karbala	Construction and installation of the GRB main sewer line connecting urban catchment areas to the main wastewater treatment plant	2013	2014
14	Saif Saad - Karbala Urban Roads & Public Space Works	Karbala Governate	Karbala	Civil works including road paving, pedestrian pathways, and infrastructure enhancements.	2013	2014
15	Al Mhawil - Babylon Drainage Expansion	HydroMax	Babylon	Installation of drainage pipelines, inspection chambers, and flood control structures.	2014	2015
16	Al Baiaa 3 - Baghdad Traffic & Roads Improvement	PrimeWay Engineering	Baghdad	Road resurfacing, traffic signal installation, and pedestrian safety enhancements.	2014	2015
17	um taihaa Road and Bridge Project 2012	Maa Alsamaa International Company	Basra	Supplying Concrete for Pouring the Road and Bridge	2014	2015
18	Al-Khairat Power Generation Plant	Karbala Electricity Distribution	Karbala	Subcontracted civil, structural, and infrastructure works for the power generation facility, construction of buildings, foundations, cable trenches, equipment bases, and auxiliary facilities.	2014	2015
19	Al Amin ALDakhili - Karbala Industrial Area Infrastructure	Karbala Governate	Karbala	Complete civil works including road construction, utilities corridors, and stormwater networks.	2015	2016
20	Alhamza AL Sharqi - Babylon Bridge Reconstruction	Babylon Governate	Babylon	Structural replacements, bearing upgrades, and concrete deck improvements.	2015	2016
21	miscellaneous work Baghdad Municipal Mechanical Upgrade	Baghdad Municipality	Baghdad	Mechanical works including pumping systems, HVAC ducting, and mechanical piping upgrades.	2015	2016
22	Al iskandaria - Babylon Sewer System Rehabilitation	MegaFlow	Babylon	Pipe relining, manhole reconstruction, and pumping station mechanical upgrades.	2016	2017
23	Main Water Trunk Line	AquaFlow Systems	Basra	Construction of a major transmission line with valve chambers and road reinstatement works.	2016	2017
24	Hour Rejab - Baghdad Stormwater Infrastructure	AL-Faras Company	Baghdad	Construction of drainage culverts, pre-cast channels, and stormwater detention basins.	2017	2018
25	Hour Rejab - Baghdad Roads Package 3	Baghdad Municipality	Baghdad	Full-depth road reconstruction, utilities relocation, and asphalt paving for multiple districts.	2017	2018

No.	Project Name	Client	Location	Scope	Work Description	Start Date	Finish Date
27	Ain tammer - Karbala Power Station Service Works	ElectroPrime Europe	Karbala	Civil/Mechanical/Electrical	Mechanical, electrical, and civil support works for power station expansion.	2018	2019
28	AL Thawra - Babylon Bridge Expansion Phase 2	SteelSpan Europe	Babylon	Civil	Bridge widening, girder reinforcement, and new concrete deck works.	2018	2019
29	Al Qudos - Baghdad North Power Distribution Upgrade	VoltTech Global	Baghdad	Electrical	Installation of new MV/LV feeders, transformers, and network automation systems.	2019	2019
30	Al Amil - Karbala District Road Reconstruction	Karbala Governate	Karbala	Civil	Asphalt paving, culverts, subbase works, and utilities crossing protection.	2019	2020
31	Al Doraa - Baghdad Central Substation Expansion	PowerGrid Int.	Baghdad	Electrical	Installation of transformers, protection relays, and GIS components.	2020	2020
32	Al Mahmodia - Baghdad City Bridge Phase 2	Baghdad Governate	Baghdad	Civil	Structural strengthening, deck overlay installation, and reinforced concrete repairs.	2020	2021
33	Al Mahmodia - Baghdad Southern Access Roads	Baghdad Governate	Baghdad	Civil	Road extension, pavement layers, and intersection geometric improvements.	2021	2021
34	Al Shibanat - Karbala Municipal Infrastructure Package	Karbala Governate	Karbala	Civil	Roads, drainage networks, concrete utility channels, and public infrastructure works.	2020	2021
35	Abi Qaraq - Babylon Power Line Rehabilitation	ElecLine International	Babylon	Electrical	Transformer upgrades, overhead line rehabilitation, and electrical protection enhancements.	2021	2022
36	Badara Oilfield -Civil Facilities Upgrade	Samsung Engineering	Wasit	Civil	Civil works for well pad access roads, drainage systems, concrete foundations, and structural preparation for oil production equipment.	2021	2022
37	Karbala Refinery Support Facilities – Civil Works	NPC/HDEC	Karbala	Civil	Construction of access roads, concrete storage yards, firefighting water lines, and pipe rack foundations.	2021	2022
38	FCC Project	Loyal Al-Watan	Basra	Logistics	provision of heavy and light construction equipment and manpower supplying for civil work	2021	2022
39	BUB AL Sham - Baghdad City Infrastructure Rehabilitation	Al-Nahr Engineering	Baghdad	Civil	Rehabilitation of municipal roads, sidewalks, stormwater drains, and public facilities.	2022	2022
40	Fao Grand Port – Container Terminal Civil Works	Maa Al samaa	Basra,	Civil	Execution of earthworks, ground improvement, concrete foundations, pavements, drainage systems, and support infrastructure for container terminal facilities.	2022	2023
41	sawthren - Baghdad Highway Improvement	RoadMasters	Baghdad	Civil	Widening, asphalt paving, embankment stabilization, and installation of road safety barriers.	2022	2023
42	Al Rehab - Karbala Electrical Substation	VoltNet	Basra,	Electrical	Replacement of switchgear, transformers, and electrical protection systems.	2022	2023
43	Al Hussain zone - Karbala Water Treatment Upgrade	Karbala Governate	Karbala	Civil/Mechanical	Civil and mechanical upgrades including filtration units, clarifiers, and chemical dosing systems.	2022	2023
44	Pipeline Corridor Civil Development	Petronas	Nasriya	Civil	Civil works for pipeline corridors including excavation, duct banks, supports, backfilling, and road restoration.	2022	2023
45	Sports Facilities Complex	Layton Resources Inc	Karbala	Logistics	Providing Equipment for sports facilities complex in Karbala, including basketball courts, tennis courts, futsal courts, and a soccer field.	2022	2023

# COMPANY GALLERY

These are some of WAHAT AL BANAA CO. projects:



Planning, implementation, and operation of portable water plants



# COMPANY GALLERY

These are some of WAHAT AL BANAA CO. projects:

## 2. Planning, implementation, and operation of portable water plants

The Balad water project, Al-Zuhur in Baghdad, Mussyab water, Jurf Al-Nasr, Alexandria, and others.



Planning, implementation, and operation of portable water plants



# COMPANY GALLERY

These are some of WAHAT AL BANAA CO. projects:

## 1. Sewage treatment plants planning, implementation, and operation

- *West-Baquba sewage treatment*
- *East Baquba networks*
- *balad sewerage*
- *processing and implementation of sewage and rain networks*
- *Implementation of a sewer network in Al-Nida district, Baghdad*
- *implementation of a sewer network in Al-Salam district*
- *Preparation of a study and design of a project of a sewage, network, pumping stations and treatment plant for Qasim, hashimea, Midhtia town*
- *Preparation of a study and design for project sewage plant treatment and networks of rain with sub and main sewage heavy and pumping stations*



# COMPANY GALLERY



# COMPANY GALLERY

These are some of AWAHAT AL BANAA CO. projects:

## 3. Planning and implementation of roads and bridges

We have extensive experience building roads, as we have taken the lead in implementing many road projects. Some of our projects include the Mafraq Bridge in Diyala, the Maitham Al-Tammar Bridge in Karbala, and the Nader Bridge in Babil Governorate.



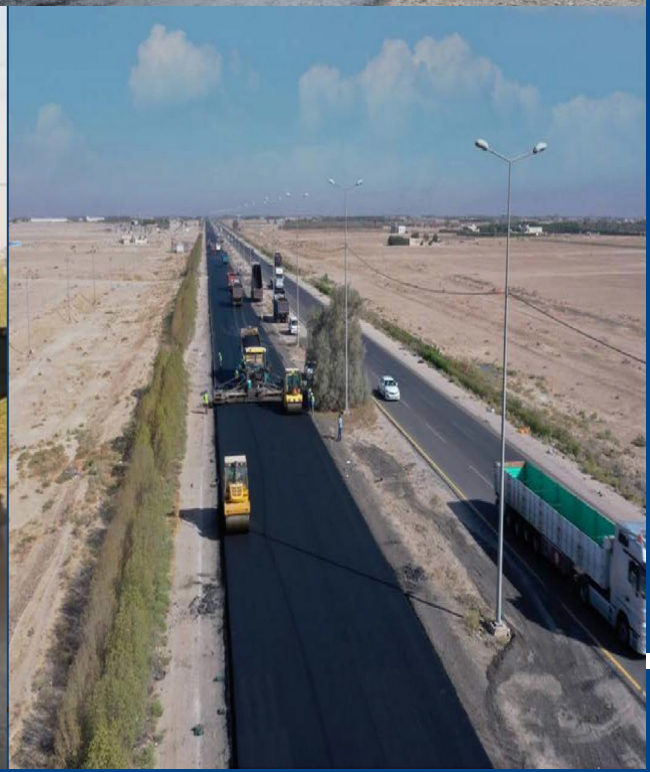
Planning and implementation of roads and bridges



# WAHAT AL BANAA'S ASPHALT SITE

## FACILITIES.

Our site is covering a total area of 180,000 m2, that contains several facilities as explained below:



# WAHAT AL BANAA'S ASPHALT SITE

## FACILITIES.



Equipment Name	Number of Equipment	Equipment Model	Equipment Details
Asphalt Paver	3	VOGELE - SUPER 2100-3	Gross Vehicle Weight (kg): 22,550 630 : )Dimensions Length )cm Dimensions Width )cm): 310 Dimensions Height )cm): 305 Engine Power )hp): 186 Fuel / Energy Supply: Diesel High Leveling System: VOGELE NIVELTRONIC Transport Bruto Weight )kg): 22550 Country Of Origin: Germany
Roller Compactor	4	7T Bomag BW151 AD-50 Double Drum Roller	Operating Weight: 7600 kg Machine Dimensions: L=4400 mm, W=1844 mm, H=3000 mm Drum Width: 1680 mm Drum Type: Double Steel Drum Speed: 11 km/h Fuel Capacity: 125 L
Sweeper	2	Broce Broom 350	.Weight: 5000 lbs "Length: 172 "Transport Width: 98 "Height: 102 'Inside Turning Radius: 13 "Sweep- ing Width: 96 .Sweeping Angle: 45 degrees left or right .Fuel Type: Diesel
Asphalt Distributor Truck	2	Mercedes Actros	mm): 200-6000) Spraying width Asphalt spraying dosage )kg/m2): 0.2~3.0 Asphalt tank capacity )L): 8000 Max. total weight (t): 18 Spraying medium: Emulsified asphalt, hot (modi- fied) asphalt Heating: RIELLO G20 Diesel burner Fuel tank )L): 400L 3-15 :)km/h) Working speed Dimension (mm): 8950x2500x3140
Air Compressor	2	Atlas Cap-co-XAS-186	mm 4356 :Length Unlad- en Weight: 1883 kg Pressure: 12 Bar Free Air Deliv- ery: 370 CFM Width: 1701 mm Height: 1661 mm
Air Compressor	1	Atlas Cap-co-XATS-800	Cooling System: Water Number of Cylinders: 6 Capacity of Oil Sump (approx.): 14 gal Capacity of Fuel Tank: 77 + 26 gal Speed-maximum Loaded: 2,000 rpm Horsepower: 249 bhp Normal Effective Working Pressure: 58 psi Maxi- mum Unloading Working Pressure: 171 psi Actual Free Air Delivery: 774 cfm
Bitumen Injector	2		Size: 390*174*210cm Weight: 1850kg Engine Power: 30KW Engine type: 4 cylinder diesel engine Fuel: Diesel oil Diesel fuel capacity: 50L Working Pressure: 6-9Mpa adjustable Minimum turning radius: 5.5m Volume: 500L

# COMPANY GALLERY

These are some of WAHAT AL BANAA CO. projects:

## 3. Planning and implementation of roads and bridges

We have extensive experience building roads, as we have taken the lead in implementing many road projects. Some of our projects include the Mafraq Bridge in Diyala, the Maitham Al-Tammar Bridge in Karbala, and the Nader Bridge in Babil Governorate.



Planning and implementation of roads and bridges



# COMPANY GALLERY

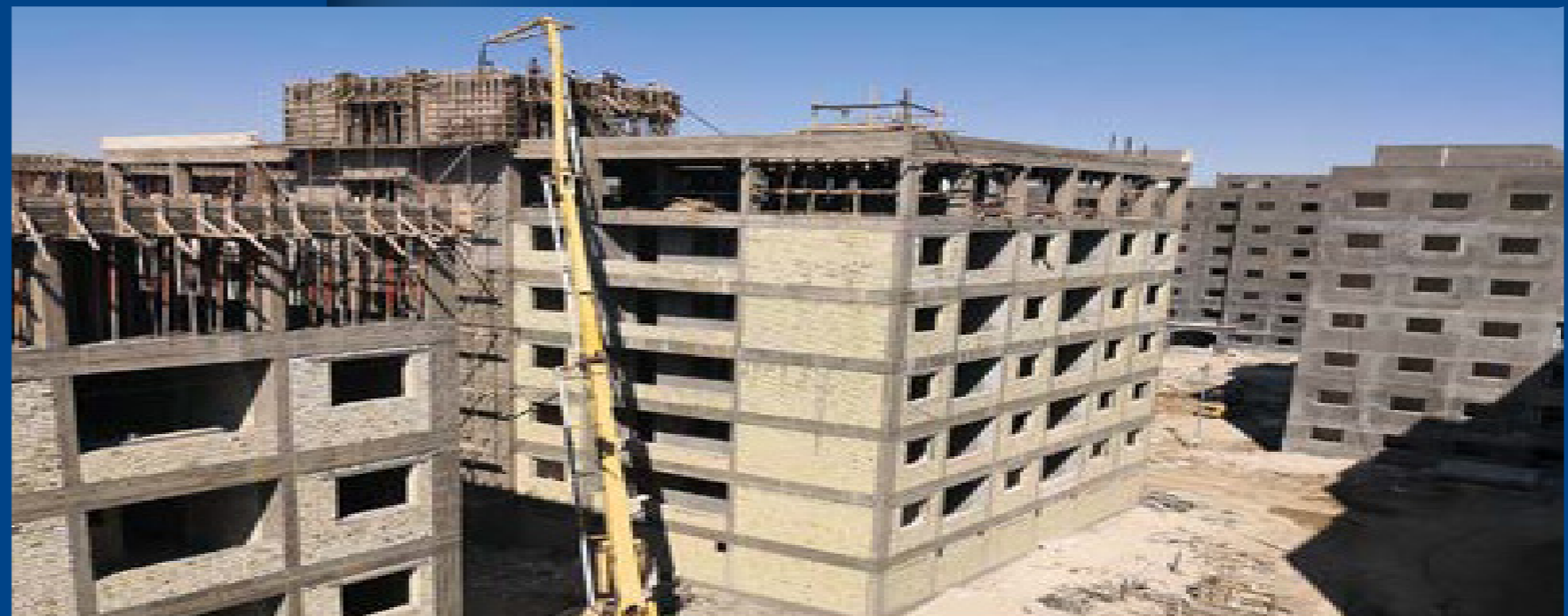
These are some of WAHAT AL BANAA CO. projects:

## 4. Design, implementation, and management of cities and residential buildings projects

WAHAT AL BANAA CO. turned towards reviving the residential sector, one of the critical sectors for the country's economy and society. In this regard, we have worked on building residential, commercial, and entertainment complexes to meet the growing population, especially in Baghdad, and to be part of solving the housing sector issues.

Al-Shaab Residential Complex is one of the housing projects aimed at filling the deficit in the housing sector and providing integrated services to the honorable Iraqi families, and many other projects, such as Al-Daoudi Commercial Complex, Al-Sahab Tower, Al-Shaab II Complex and Baghdad Dream Complex, where the group plans, implements and manages them.

WAHAT AL BANAA CO. contracting portfolio includes various projects in different important sectors, such as the design and implementation of hospitals, power stations (generation, transmission, transportation, and renewable energy projects), and the oil and gas industry (refineries, pipelines, and wells).



4  
Design, implementation, and management of cities and residential buildings projects



- Construction of high-voltage lines 33 KV and 132 KV and 400 KV in addition to Supplying and implementation of electric power, processing and implementation of mobile power stations converter stations.

# CERTIFICATIONS



## Certificate of Registration

This is to certify that

### WAHAT AL-BANAA COMPANY

IRAQ, BASRA, AL-ZUBAIR, SAFWAN ROAD, NEXT TO SARENS COMPANY

has been independently assessed by QRO  
and is compliant with the requirement of:

**ISO 9001:2015**

### Quality Management System

For the following scope of activities:

PROVISION OF CONTRACTING, ENGINEERING, PROCUREMENT, CONSTRUCTION,  
COMMISSIONING, TRADING, GENERAL SERVICES, GENERAL TRANSPORT, LOADING  
AND UNLOADING, GENERAL LOGISTICS, MANPOWER SUPPLYING, EQUIPMENT  
RENTAL, INSPECTION AND TESTING SERVICES.

Date of Certification: 11th December 2025  
1<sup>st</sup> Surveillance Audit Due: 10th December 2026

2<sup>nd</sup> Surveillance Audit Due: 10th December 2027  
Certificate Expiry: 10th December 2028

Certificate Number: 3050251211103Q



*Chaman ..*  
Head of Certification

Validity of this certificate is subject to annual surveillance audits to be done successfully on or before 365 days from date of the audit.  
(In case surveillance audit is not allowed to be conducted; this certificate shall be suspended / withdrawn).

The Validity of this certificate can be verified at [www.qrocert.org](http://www.qrocert.org)

This certificate of registration remains the property of QRO Certification LLP, and shall be returned immediately upon request.

India Office : QRO Certification LLP

142, 11nd Floor, Avtar Enclave, Near Paschim Vihar West Metro Station, Delhi-110063, (INDIA)  
Website : [www.qrocert.org](http://www.qrocert.org), E-mail : [info@qrocert.org](mailto:info@qrocert.org)



## Certificate of Registration

This is to certify that

### WAHAT AL-BANAA COMPANY

IRAQ, BASRA, AL-ZUBAIR, SAFWAN ROAD, NEXT TO SARENS COMPANY

has been independently assessed by QRO  
and is compliant with the requirement of:

**ISO 45001:2018**

### Occupational Health and Safety Management System

For the following scope of activities:

PROVISION OF CONTRACTING, ENGINEERING, PROCUREMENT, CONSTRUCTION,  
COMMISSIONING, TRADING, GENERAL SERVICES, GENERAL TRANSPORT, LOADING  
AND UNLOADING, GENERAL LOGISTICS, MANPOWER SUPPLYING, EQUIPMENT  
RENTAL, INSPECTION AND TESTING SERVICES.

Date of Certification: 11th December 2025  
1<sup>st</sup> Surveillance Audit Due: 10th December 2026

2<sup>nd</sup> Surveillance Audit Due: 10th December 2027  
Certificate Expiry: 10th December 2028

Certificate Number: 3050251211106HS



*Chaman ..*  
Head of Certification

Validity of this certificate is subject to annual surveillance audits to be done successfully on or before 365 days from date of the audit.  
(In case surveillance audit is not allowed to be conducted; this certificate shall be suspended / withdrawn).

The Validity of this certificate can be verified at [www.qrocert.org](http://www.qrocert.org)

This certificate of registration remains the property of QRO Certification LLP, and shall be returned immediately upon request.

India Office : QRO Certification LLP

142, 11nd Floor, Avtar Enclave, Near Paschim Vihar West Metro Station, Delhi-110063, (INDIA)  
Website : [www.qrocert.org](http://www.qrocert.org), E-mail : [info@qrocert.org](mailto:info@qrocert.org)



# Certificate of Registration

This is to certify that

## WAHAT AL-BANAA COMPANY

IRAQ, BASRA, AL-ZUBAIR, SAFWAN ROAD, NEXT TO SARENS COMPANY

has been independently assessed by QRO  
and is compliant with the requirement of:

### ISO 14001:2015

### Environmental Management System

For the following scope of activities:

PROVISION OF CONTRACTING, ENGINEERING, PROCUREMENT, CONSTRUCTION,  
COMMISSIONING, TRADING, GENERAL SERVICES, GENERAL TRANSPORT, LOADING  
AND UNLOADING, GENERAL LOGISTICS, MANPOWER SUPPLYING, EQUIPMENT  
RENTAL, INSPECTION AND TESTING SERVICES.

Date of Certification: 11th December 2025

2<sup>nd</sup> Surveillance Audit Due: 10th December 2027

1<sup>st</sup> Surveillance Audit Due: 10th December 2026

Certificate Expiry: 10th December 2028

Certificate Number: 3050251211105E



*Signature*  
Head of Certification

Validity of this certificate is subject to annual surveillance audits to be done successfully on or before 365 days from date of the audit.  
(In case surveillance audit is not allowed to be conducted; this certificate shall be suspended / withdrawn).

The Validity of this certificate can be verified at [www.qrocert.org](http://www.qrocert.org)

This certificate of registration remains the property of QRO Certification LLP, and shall be returned immediately upon request.

India Office : QRO Certification LLP

142, 1<sup>st</sup> Floor, Aytar Enclave, Near Paschim Vihar West Metro Station, Delhi-110063, (INDIA)

Website : [www.qrocert.org](http://www.qrocert.org), E-mail : [info@qrocert.org](mailto:info@qrocert.org)

## OUR CLIENTS



### SAMSUNG ENGINEERING



# Al-Sabil Humanitarian Organization

Al-Sabil is an Iraqi charitable organization established in 2018 voluntarily. It implements its programs and activities through donations of its members, either individuals or companies. Al-Sabil is now operating in most provinces of Iraq and has more than 250 members throughout the country.



Our intensive work includes people with special needs alongside the people in need. We like to call them people of great determination as they're a priority to help in a society that doesn't treat them appropriately.



We achieved many goals:

- They have branches in Baghdad, Karbala, Salah al-Dine, Tikrit, Basra, and Nasiriyah.
- We have a Ramadan program for distributing food baskets to needy families.
- We have many rehabilitation activities and programs.



## CLOSING MESSAGE

At WAHAT AL-BANAA Co., we believe that *quality, integrity, and innovation* are the foundations of sustainable success.

Our journey continues toward building Iraq's infrastructure and industry with the highest standards of professionalism and safety.

**“The sky is not the limit — it's our starting point.”**

We extend our sincere gratitude to our clients, partners, and dedicated employees for their trust, cooperation, and continued support.

## CONTACT US

**Address:** Iraq-Al-Basrah- AL-Zubair – Safwan Road, next to Sarens Company

**Website:** [www.wahat-albanaa.iq](http://www.wahat-albanaa.iq)

**Email:** [info@wahat-albanaa.iq](mailto:info@wahat-albanaa.iq) , [Tech-dep@wahat-albanaa.iq](mailto:Tech-dep@wahat-albanaa.iq)

**Iraq:** +964-771 300 0081 - +964-781 300 0081

